

WISCONSIN IS STILL SUFFERING IN THE WAKE OF THE GREAT RECESSION

August 2011 marks the second month in a row of bad news on Wisconsin jobs. The state lost 2,300 jobs in August, and unemployment ticked up to 7.9 percent. This news stands in contrast to the consistent gains posted over the first half of 2011 and provides more evidence that this recovery is still too weak to generate the jobs that Wisconsin workers so desperately need.

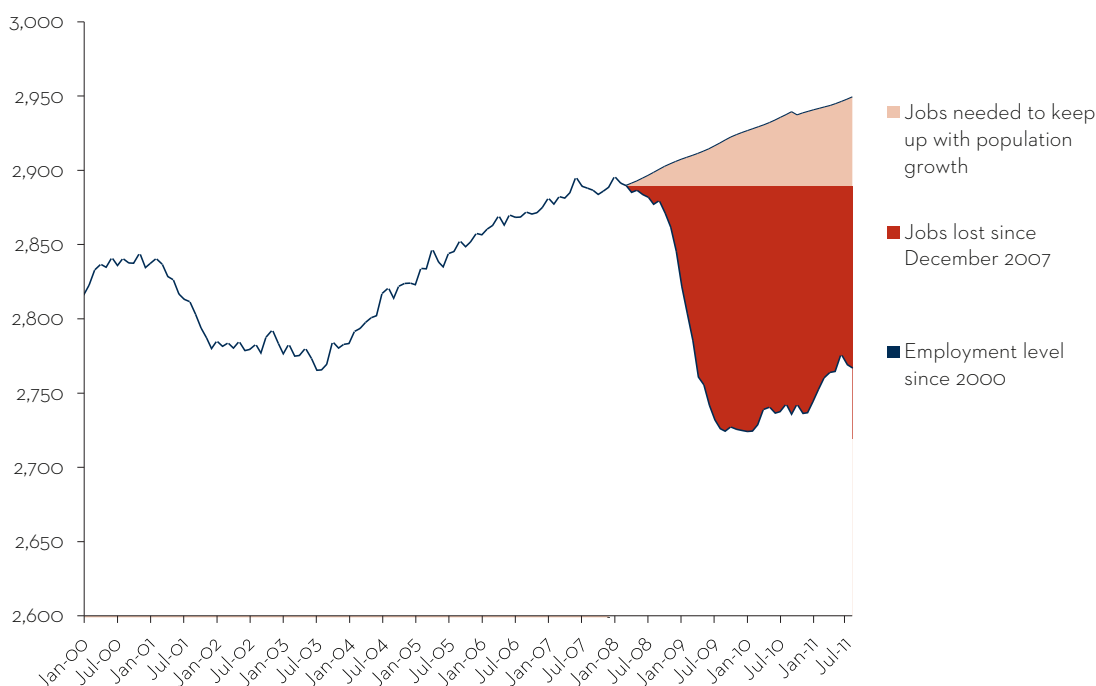
Wisconsin has an enormous jobs deficit of 183,100 – that’s the difference between the number of jobs Wisconsin has and the number it needs to regain its pre-recession employment. That number includes the 121,800 jobs Wisconsin lost plus the 61,300 jobs it needs to keep up with the 2.1 percent growth in population that Wisconsin has experienced in the 44 months since the recession began.

The Wisconsin labor market is still weak, and unemployed workers in Wisconsin are still facing long lines to get into jobs. Wisconsin has not recovered from the Great Recession. As elected officials at both the state and federal level make policy choices to deal with budget shortfalls, they should avoid decisions that threaten to throw even this very tentative recovery into reverse. Putting people back to work needs to be the primary goal for lawmakers.

WISCONSIN'S JOBS DEFICIT

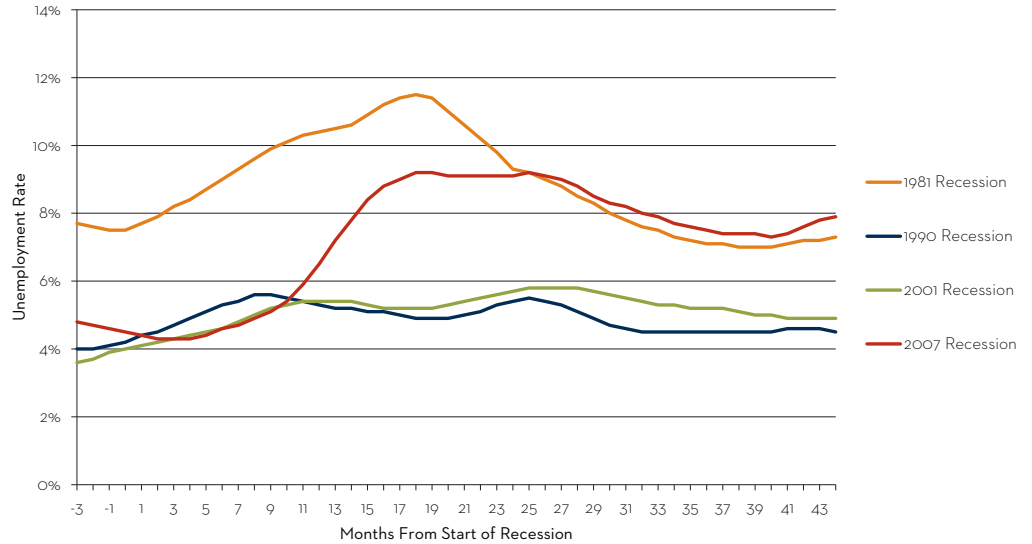
Start of the recession	December 2007
Number of jobs	2,888,200
Labor market trough	January 2010
Number of jobs	2,723,600
Peak-to-trough shortfall	-164,600
Current month	August 2011
Number of jobs	2,766,400
Change from previous month	-2,300
Jobs lost since the start of the recession	-121,800
Population growth since the recession began	2.1%
Number of jobs needed to accommodate population growth	61,300
Jobs Deficit	183,100

THE JOBS DEFICIT



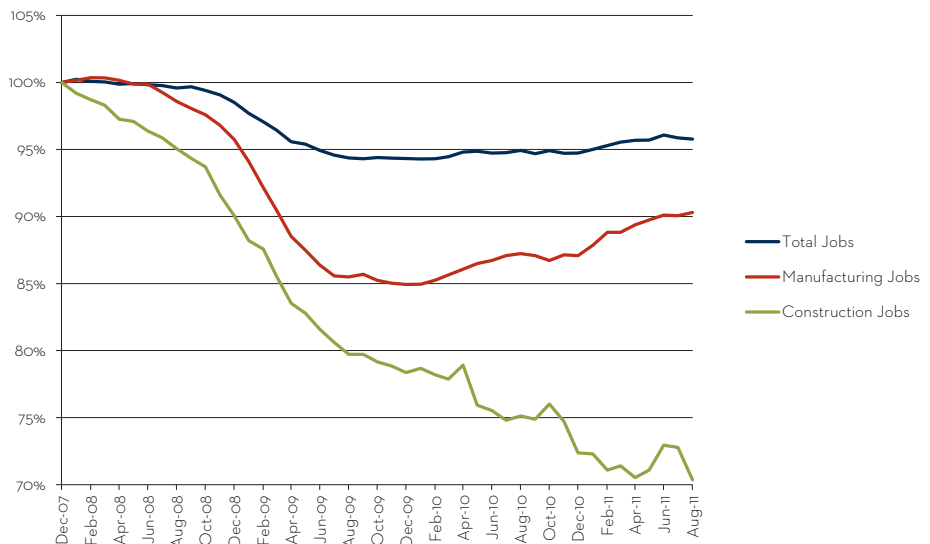
UNEMPLOYMENT INCREASES

Unemployment	
August 2011 unemployment rate	7.9%
Change since last month	+0.1%
Change since start of recession	+3.4%
Peak unemployment during recession	9.2%
Unemployment rate before recession	4.5%



MANUFACTURING CONTINUES GAINS, CONSTRUCTION DOWN AGAIN

Manufacturing	
August 2011 employment	450,000
Change from previous month	+1,200
Percent change this recession	-9.7%
Construction	
June 2011 employment	87,100
Change from previous month	-3,000
Net change this recession	-29.6%



Wisconsin Job Watch, a monthly publication of COWS, provides a snapshot of Wisconsin's job picture and reports on key recession trends. The numbers provided in this report are based on seasonally-adjusted Bureau of Labor Statistics data compiled by the Economic Policy Institute (www.epi.org).

COWS is a nonprofit think-and-do tank, based at the University of Wisconsin-Madison, that promotes "high road" solutions to social problems. These treat shared growth and opportunity, environmental sustainability, and resilient democratic institutions as necessary and achievable complements in human development. COWS is nonpartisan but values-based. We seek a world of equal opportunity and security for all. For more information, visit www.cows.org.

C O W S
center on wisconsin strategy

1180 Observatory Drive • Madison, WI
608.263.3889 • www.cows.org